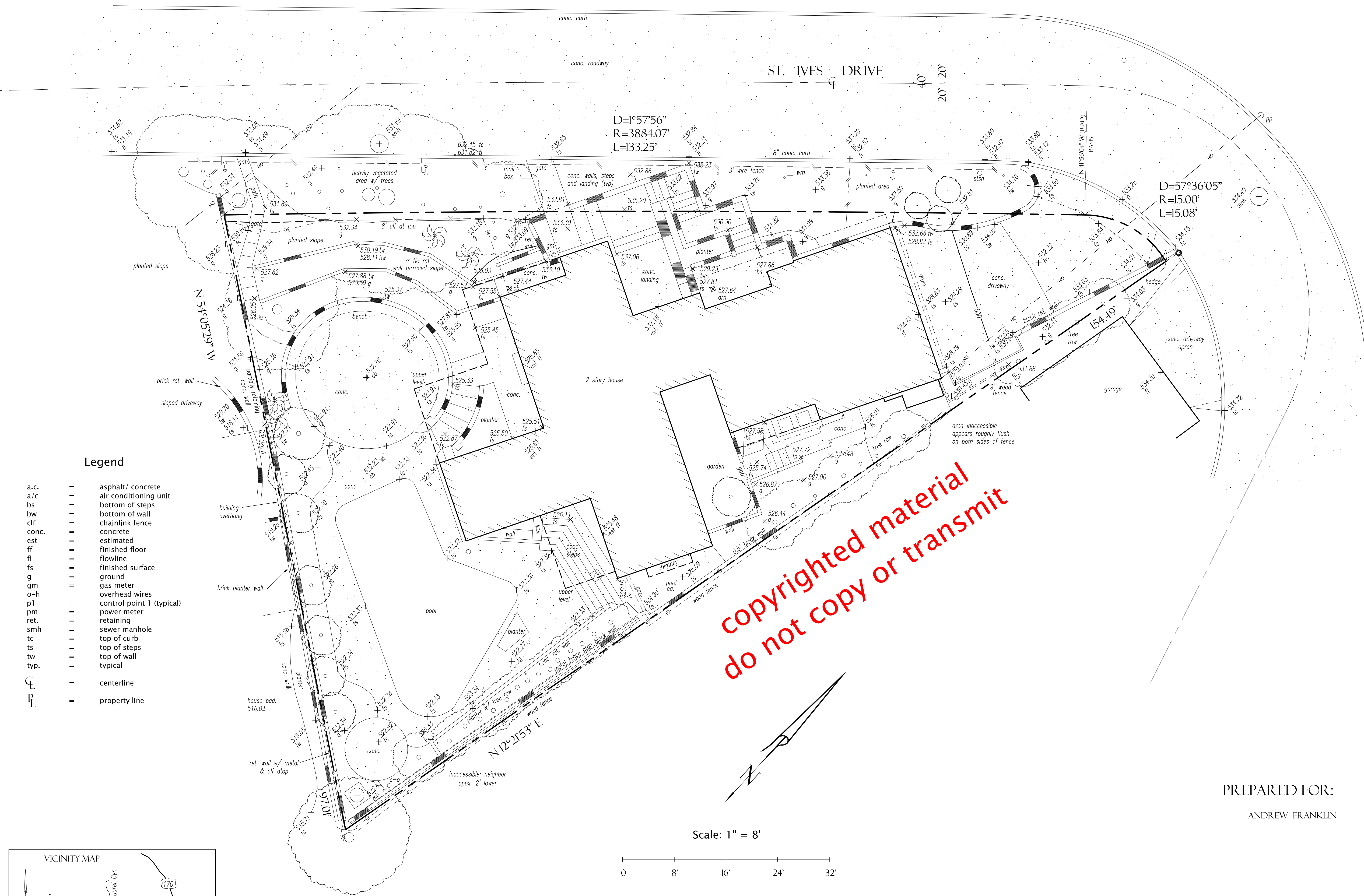


# ARCHITECTURAL SURVEY



**Job site:**

9116 Saint Ives Dr.  
Los Angeles, CA. 90069

**Legal Description:**

A portion of Lot 8  
Tract No. 5365  
Map Book 62 pgs. 5-6  
APN: 5560-031-002

**Boundary:**

The boundary shown hereon is record information calculated to close and adjusted to found City centerline monumentation using standard survey procedure.

**Bench mark:**

The elevation of 534.4 on Sewer Manhole station No. 2+66.44, as shown on Sewer "Y" Map No. 7021-2 on file with the City of Los Angeles, was used as datum for this survey.

**Basis of Bearings:**

The bearing of N 41°56'04" W along the pcc radial (shown hereon), as shown on Tract No. 5365, Map Book 62 pgs. 5-6, was used as the basis of bearings for this survey.

**Date of Survey:**

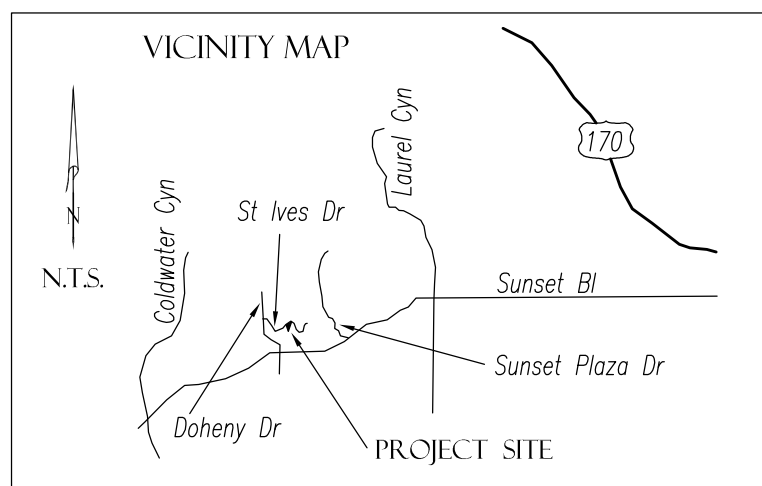
20 February 2010

**Area:**

7,417 square feet; 0.17 acres

**Legend**

- a.c. = asphalt/ concrete
- a/c = air conditioning unit
- bs = bottom of steps
- bw = bottom of wall
- cif = chainlink fence
- conc. = concrete
- est = estimated
- ff = finished floor
- fl = flowline
- fs = finished surface
- g = ground
- gm = gas meter
- o-h = overhead wires
- p1 = control point 1 (typical)
- pm = power meter
- ret. = retaining
- smh = sewer manhole
- tc = top of curb
- ts = top of steps
- tw = top of wall
- typ. = typical
- CL = centerline
- PL = property line



PREPARED FOR:  
ANDREW FRANKLIN

PREPARED BY:  
JO NELSON  
CONSULTING LAND SURVEYORS, INC.  
A PROFESSIONAL LAND SURVEYING CORPORATION  
11040 SANTA MONICA BL., SUITE 470  
LOS ANGELES, CA 90025  
(310) 337-1778  
WWW.JONELSONCLS.COM

Scale: 1" = 8'

