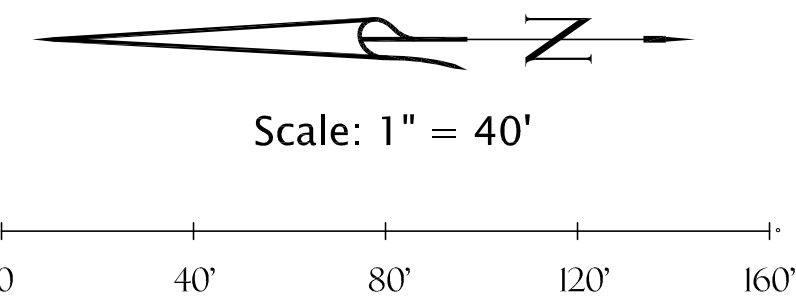
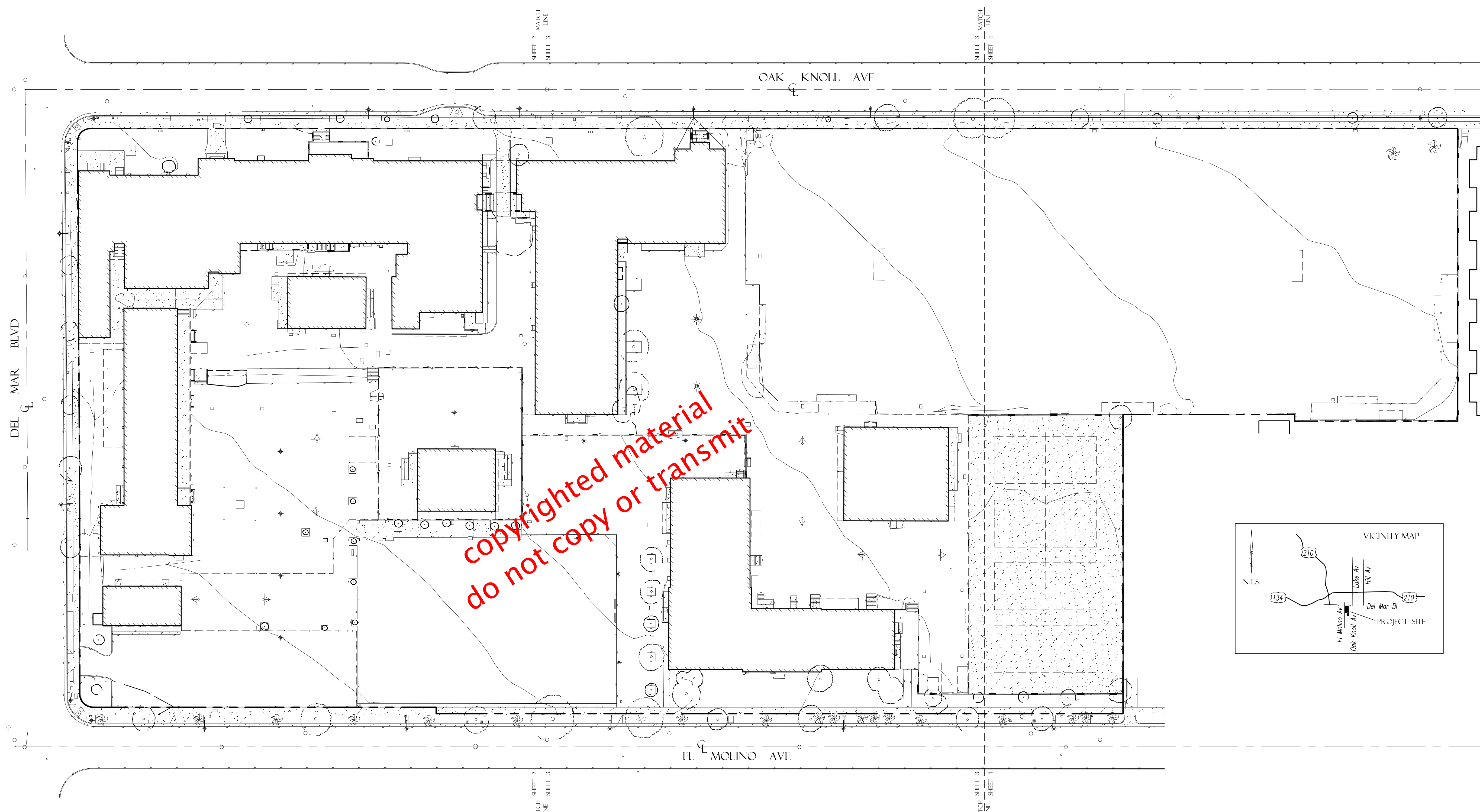


ARCHITECTURAL SURVEY

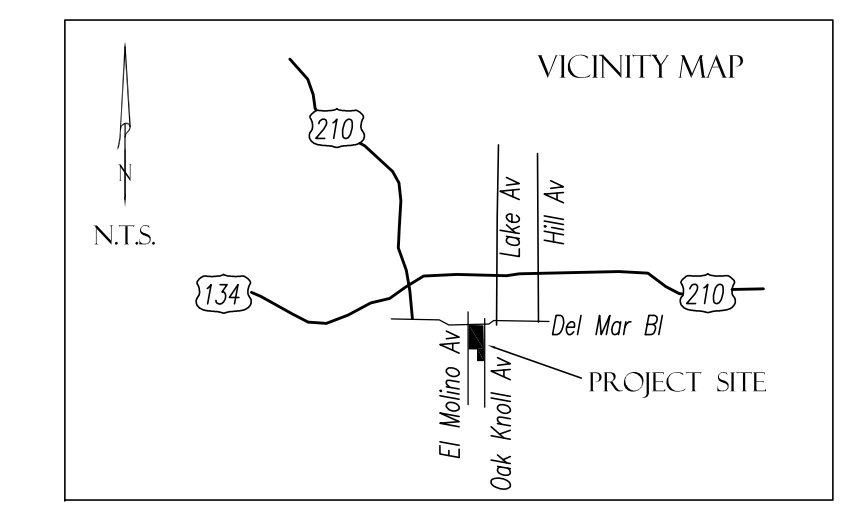


Legend

a.c.	=	asphalt / concrete
a/c	=	air conditioning unit
bt rmp	=	bottom of ramp
2.8bw	=	bottom of wall - 2.8' high (typ.)
bs	=	bottom of steps
bw	=	bottom of wall
bx	=	box
c	=	conc.
cb	=	catch basin
cif	=	chainlink fence
cluster	=	tree cluster
conc.	=	concrete
ctv	=	cable t.v.
d-o	=	drain outlet
e	=	electric
emh	=	electric manhole
eq	=	equipment
ff	=	finished floor
fl	=	flowline
fontn	=	fountain
fs	=	finished surface
fsp	=	fire sprinkler plug
g	=	ground
gm	=	gas meter
gv	=	gas valve
o-h	=	overhead wires
p1	=	control point 1 (typical)
pm	=	power meter
pp	=	power pole
ret.	=	retaining
smh	=	sewer manhole
sn	=	sign
stlt	=	street light
t	=	threshold (estimated finished floor)
t-b	=	tether-ball post
tc	=	top of curb
tfs	=	traffic signal
tp rmp	=	top of ramp
ts	=	top of steps
tp	=	top of wall
2.0tw	=	top of wall - 2.0' high (typ.)
typ.	=	typical
ug	=	underground service pipes
w	=	water
w.i.	=	wrought iron fence
wm	=	water meter
wv	=	water valve
CL	=	centerline
PL	=	property line
CR	=	handicapped access ramp



copyrighted material
do not copy or transmit



Job site:
..
..
Pasadena, CA 91101

Boundary:
A boundary survey was not done for purposes of this survey. The boundary shown hereon is for reference purposes only. No title documents available at time of survey and no easements plotted. The information shown hereon is per information shown on assessors map. It should be noted that a measured boundary may yield an alternate analysis.

Bench mark:
Pasadena Benchmark Bk 618/49
Elevation: 807.78
Ramset N. Curb Del Mar 5' w/o w/end ret. nw cor
Madison and Del Mar Bl.

Basis of Bearings:
The bearing of North along the centerline of El Molino Ave., as shown on the San Pasqual Tract, MR 32 page 81, was used as the basis of bearings for this survey.

Date of Survey:
20 November 2009

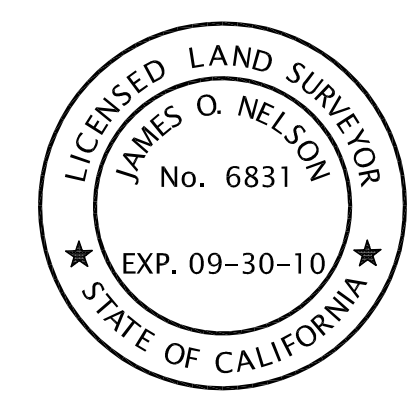
Utility Note:
The utilities shown hereon were taken from surface field observations and available records at the time of survey, and are only as accurate as said records. Field verify before any excavation.

Area:
416,919 square feet; 9.57 acres

PREPARED FOR:

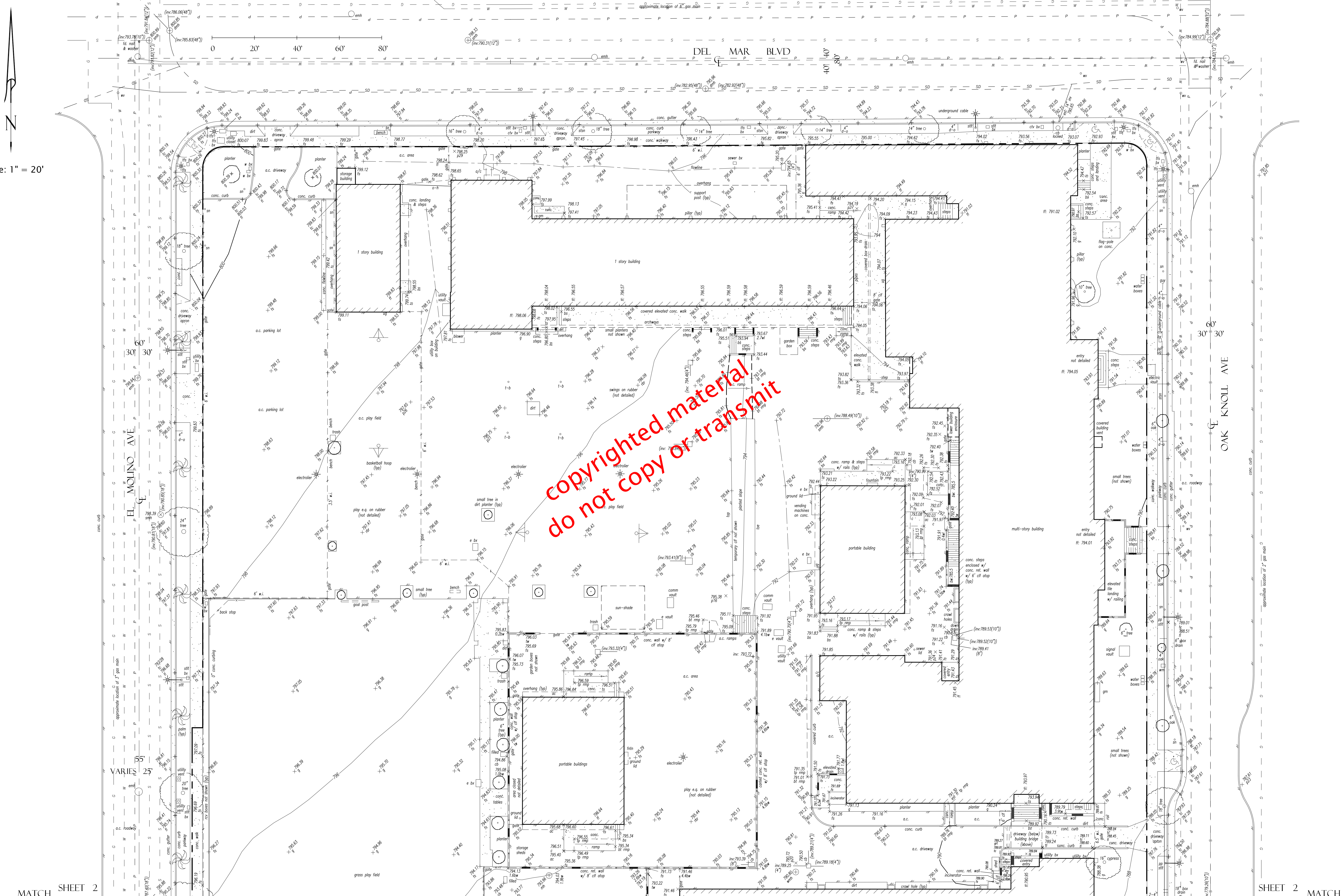
PREPARED BY:

JO. NELSON
CONSULTING LAND SURVEYORS, INC.
A PROFESSIONAL LAND SURVEYING CORPORATION
11040 SANTA MONICA BL., SUITE 470
LOS ANGELES, CA 90025
(310) 337-1778
WWW.JONELSONCLS.COM



To view detail " ctrl 1 "

Scale: 1" = 20'



copyrighted material
do not copy or transmit

MATCH SHEET 2
LINE SHEET 3

SHEET 2 MATCH
SHEET 3 LINE

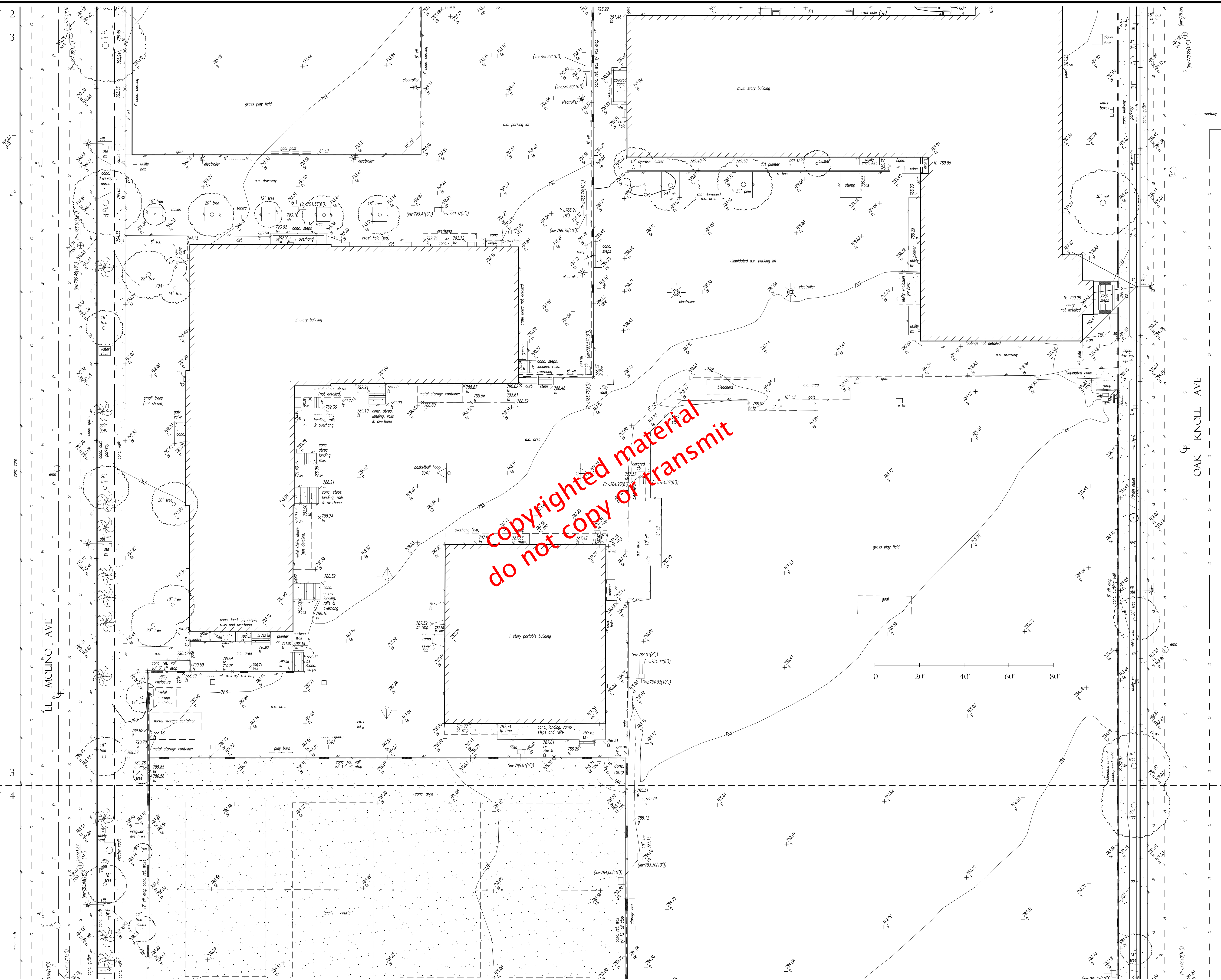
Date of this print: 13 March 2010

To view detail " ctrl 1 "

MATCH SHEET 2
LINE SHEET 3

SHEET 2 MATCH
SHEET 3 LINE

Scale: 1" = 20'



MATCH SHEET 3
LINE SHEET 4

SHEET 3 MATCH
SHEET 4 LINE



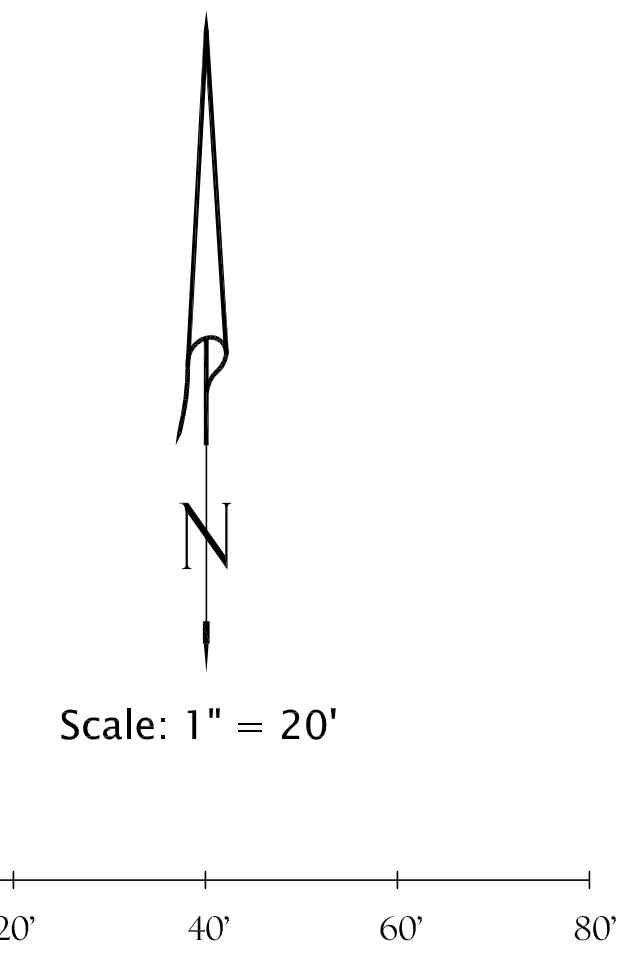
To view detail " ctrl 1 "

MATCH SHEET 3
LINE SHEET 4

SHEET 3 MATCH
SHEET 4 LINE

EL MOLINO AVE

OAK KNOLL AVE



copyrighted material
do not copy or transmit

